

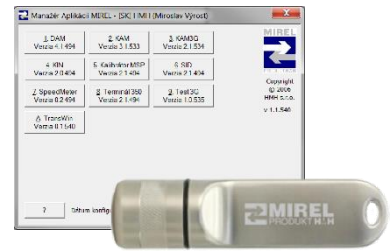
MAP Type

illustration image

The MIREL MAP software operates as manager of MIREL applications on PC or notebook. It consists of main control module and executive modules. The control module, inseparable part of created work station, controls start, control and security of executive modules. Executive modules are optional modules and they perform specific support activities for MIREL systems operation and maintenance.

Requirements on program and technical equipment for installed executive modules have been specified in respective documentation.

Detailed configuration of MIREL MAP program equipment is provided based on software equipment questionnaire sent by HMH s.r.o. Company, along with installation medium for the purpose of new license implementation or supplement of an existing one, which is then completed by the Customer and sent back.



Nomenclature



Modifications

Designation	KAM	KAM3G	MAN	MSPKAL	PAP	SID	SpeedMeter	T350	Test3G	TransWin	TSM3G	TZJ	VZTUI
MAP.1.D3	-	-	-	-	-	✓	-	-	✓	-	-	-	✓
MAP.1.INTA	✓	-	-	-	-	✓	-	-	-	-	-	✓	✓
MAP.1.INTB	✓	✓	✓	-	-	✓	✓	-	✓	0	✓	✓	✓
MAP.1.INSF	-	-	✓	-	-	-	✓	-	-	-	-	-	-
MAP.1.KON	-	-	✓	-	-	-	✓	-	-	1	-	-	-
MAP.1.S1A	✓	-	-	-	-	✓	-	-	-	-	-	-	✓
MAP.1.S1B	✓	✓	✓	-	-	✓	✓	-	✓	0	✓	-	✓
MAP.1.S1C	✓	✓	✓	✓	-	✓	✓	-	✓	0	✓	-	✓
MAP.1.S1D	✓	✓	✓	✓	-	✓	✓	✓	✓	0	✓	-	✓
MAP.1.S1Z2A	✓	-	-	-	✓	✓	-	-	-	-	-	-	✓

- ✓ module enabled, permission to execute
- 0 module enabled, basic user rights (Base)
- 1 module enabled, full user rights (Full)
- module disabled

List of MIREL MAP Executive Modules

Designation	Description
KAM	Configuration of MIREL systems 2G
KAM3G ¹⁾	Configuration of MIREL systems 3G
MAN	Visualization and analysis of registered data of MIREL systems
MSPKAL	MIREL MSP Calibrator
PAP	Programming of microcontrollers
SID	Identification of MIREL device software
SpeedMeter	Evaluation and archiving of data from MIREL RMI1 and MIREL BB (workplace MIREL ARKTUR)
T350	Testing of MIREL system RS350
Test3G	Testing of MIREL systems 3G
TransWin	Data transmission from MIREL RMI1 and MIREL BB (workplace MIREL ARKTUR)
TSM3G	Visualization of MIREL 3G systems
TZJ	Control for test device of MIREL TZJU basic units
VZTUI	Control MIREL VZT.4

¹⁾ The use with workplace KAM3GSET.1.A.

Specifications

The catalogue sheet was prepared on the basis of the following specifications:

No.	Version	Title
974MAP	231109	MIREL MAP User Manual
975MAP	231109	MIREL MAP Installation Manual
415RM1	000000	ARKTUR Operating Instructions
547MAP	231109	KAM User Manual
851MSP	000000	MSPKAL Operating Instructions
1442TZJU	230125	TZJU Operating Manual
1728M	201009	MIREL Software Equipment Questionnaire
1783MAP	180116	Test3G User manual
2309MAP	170616	TSM3G User manual
2418MAP	230517	VZTUI User manual
2658MAP	210713	MAN v02 User Manual
2578MAP	230404	KAM3G User Manual

Discontinued modifications

Designation	KAM	KAM3G	MAN	MSPKAL	SID	SpeedMeter	Test3G	TransWin	TSM3G	TZJ	Replacement
MAP.1.B	✓	✓	✓	-	✓	-	✓	-	✓	-	MAP.1.S1B
MAP.1.94408	✓	✓	✓	-	-	✓	✓	✓	✓	-	MAP.1.S1B
MAP.1.24776	✓	✓	✓	-	-	✓	-	✓	-	-	MAP.1.S1B
MAP.1.21704	✓	✓	-	✓	-	✓	✓	✓	-	-	MAP.1.S1C
MAP.1.A	✓	✓	-	-	-	✓	✓	✓	✓	-	MAP.1.S1B
MAP.1.20680	✓	✓	-	-	-	✓	✓	✓	-	-	MAP.1.S1B
MAP.1.E	✓	✓	-	-	-	-	✓	-	✓	-	MAP.1.INTB
MAP.1.20488	✓	✓	-	-	-	-	✓	-	-	-	MAP.1.INTB
MAP.1.8392	✓	-	✓	-	-	✓	-	✓	-	-	MAP.1.S1B
MAP.1.232	✓	-	-	-	✓	✓	-	✓	-	-	MAP.1.S1B
MAP.1.296	✓	-	-	-	✓	-	-	-	-	✓	MAP.1.INTA
MAP.1.40	✓	-	-	-	✓	-	-	-	-	-	MAP.1.S1A
MAP.1.4296	✓	-	-	-	-	✓	✓	✓	-	-	MAP.1.S1B
MAP.1.456	✓	-	-	-	-	✓	-	✓	-	✓	MAP.1.INTB
MAP.1.200	✓	-	-	-	-	✓	-	✓	-	-	MAP.1.S1B
MAP.1.4104	✓	-	-	-	-	-	✓	-	-	-	MAP.1.S1B
MAP.1.72	✓	-	-	-	-	-	-	✓	-	-	MAP.1.S1B
MAP.1.264	✓	-	-	-	-	-	-	-	-	✓	MAP.1.INTA
MAP.1.8	✓	-	-	-	-	-	-	-	-	-	MAP.1.S1A
MAP.1.24576	-	✓	✓	-	-	-	-	-	-	-	MAP.1.S1B
MAP.1.C	-	✓	-	-	-	-	✓	-	✓	-	MAP.1.S1B
MAP.1.D	-	-	✓	-	-	✓	-	✓	-	-	MAP.1.KON
MAP.1.F	-	-	✓	-	-	✓	-	-	-	-	MAP.1.INSF
MAP.1.192	-	-	-	-	-	✓	-	✓	-	-	MAP.1.KON
MAP.1.128	-	-	-	-	-	✓	-	-	-	-	MAP.1.INSF

- ✓ module enabled, permission to execute
- module disabled