

Number:

974MAP

Version:

210830

Project / product:

MIREL MAP Application Manager

Name:

User Manual

Additional source and connected files:

No.	File	Description	Pages / Annexes
1			
2			
3			

Changes:

Version	Description	Approved by
071113	Document introduction	Ing. Horváth
130628	Description of new activation method	Ing. Šajben
190205	Description Update of Execution Modules Start	Ing. Michalec
210830	Update of HW and SW requirements	Ing. Michalec

1 Introduction

The objective of this document is to describe the use of the control module of the MIREL application manager. This module is used to start, coordinate and secure the individual executive modules.

2 Document is related to the Following Documentation

975MAP S Navod na instalaciu.doc MAP Installation Manual

3 Definitions of terms

MAP	MIREL application manager. The application manager comprises a control module and at least one executive module.
Control module	The main MIREL control application.
Executive module	An application executing a specific functional activity (configuration, etc.)

4 Required Software and Hardware

Minimum software and hardware requirements for PC or a notebook running the MIREL MAP control module are following:

- Operating system MS Windows 7.
- Configuration recommended for the installed operating system. Multicore 2GHz CPU and 8GM RAM is recommended.
- Screen resolution 1024x768.

Further software and hardware requirements for operation of installed executive modules are described in their respective documentation. Most common requirements of executive modules are:

- .NET Framework 4.8.
- USB port.

5 Description of Module Activities

5.1 Installation Verification

On start up the control module verifies its own installation and the installation of executive modules. During such verification it may prompt the user to enter activation details or data.

The activation process is described in document 975MAP - Installation Manual.

5.2 User Interface Language

Every MIREL MAP module (executive and control module) has a specific set of supported user interface languages (hereinafter only language). The complete set includes English, Slovak, German, Hungarian, Polish and Czech. The default language is English.

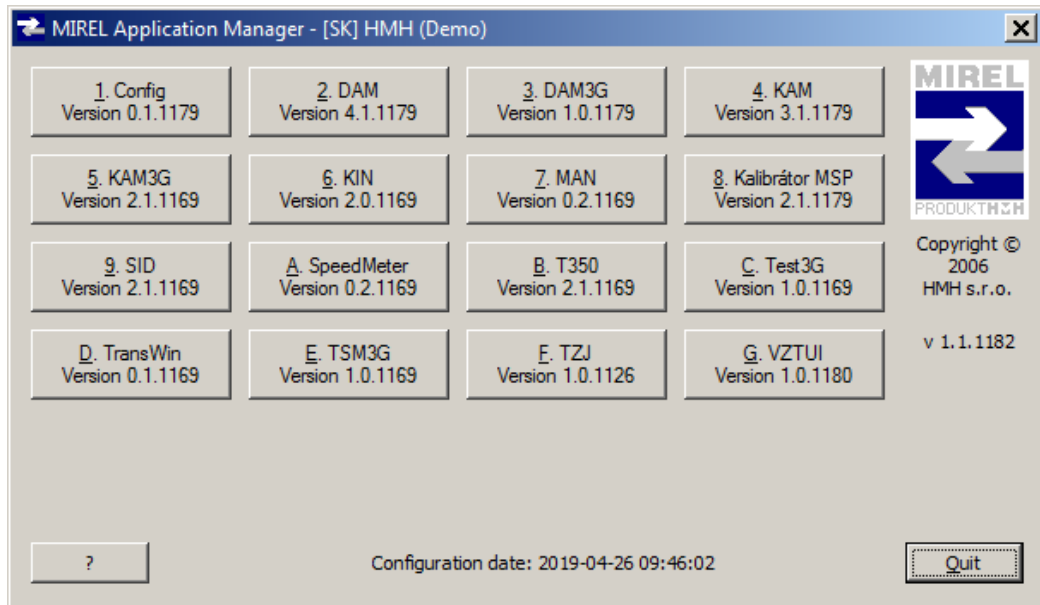
The control module supports the complete set of languages. The executive modules may not support the complete set of languages must support at least one language (this language does not have to be the default language).

If a language is specified when starting the MIREL MAP control module (started using the alias for the specific language), the control module shall configure this language. If the MIREL MAP control module is started without specifying a language then it attempts to match its settings to the operating system. If the selected language cannot be configured the default language is selected.

Executive modules are launched in the language defined for the control module. If this language is not supported, the module attempts to configure the default language. If the default language is not supported a language is configured at its discretion.

5.3 Main Control Module Window

The main window of the control module appears after successful verification of the installation. The following figure illustrates this window with the installed executive modules:



The lower section of the window contains buttons for help [?] and to close the control module [End].

The remaining buttons are used to start the individual executive modules. The numbers of these buttons correspond to the number of installed executive modules. Every button includes:

- A keyboard shortcut; keyboard shortcuts are automatically assigned from 1 to 9 and then using letters A to Z depending on the number of installed executive modules
- Name of the executive module
- Version of the executive module

Configuration date: indicates the date of last alteration of MIREL MAP configuration file.

5.4 Starting Executive Modules

Executive modules are started by pressing their individual buttons. Specification of specific executive module activities is not the subject of this document.

Only selected execution modules combinations can be started simultaneously. Start pushbuttons for execution modules are enabled depending on the fact, which other execution modules have already been started. All pushbuttons are enabled only if no other execution module has been started. Should the pushbutton related to the required execution module be disabled, it means, that it has been disabled due to combination of already started modules. In order to start it, it is required to terminate the execution modules, which are disabling the start.

Once the executive module is started the main window for the control module is minimized and only the window for the started executive module is displayed. Once the executive module finishes, the main window for the control module reappears back in its original position.

6 Closing the MIREL MAP Control Module

The [End] button in the lower right-hand portion of the main window is used to close the control module.

Should any execution modules rung upon control module termination, the control modules shall try to terminate gradually all of them. Prior to termination of each execution module, the control module asks, if you wish to terminate it. Subsequently, the execution module, which you wish to terminate:

- If possible, terminates immediately its activity.
- Should it be executing at the same moment an operation, which can't be interrupted, it refuses to terminate its activity.

The control module terminates its activity only in case, that it managed to terminate successfully all running execution modules.

The control module closes immediately if no executive module is running when it is closed.