

# Detector of MIREL SHP System Rail Line Electromagnets

## Type SHPA

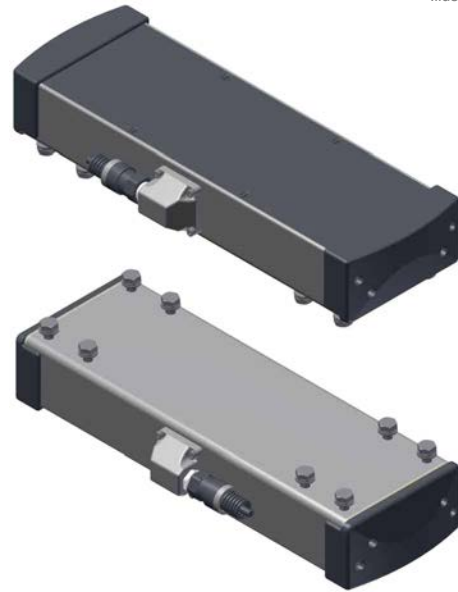
Illustrative pictures

MIREL SHPA detector of rail line electromagnets is intended as a cooperating device for the mobile part of Polish SHP train protection system, to detect passing over rail line electromagnets, located in Polish rail line infrastructure. It provides for active search based on principle of electromagnetic field coupling by mutual bond of resonance circuits tuned to identical resonance frequency of 1kHz.

The scanner consists of one tuned resonance circuit and electrically separated check winding, which are put on a ferromagnetic core.

Encapsulation of inductive set is provided as an open aluminium bushing, where the aluminium mantle forms also a natural shielding from eventual interference effect of rolling stock.

SHPA detector meets requirements on fire properties pursuant STN EN 45545-2; level HL2.



### Nomenclature

SHPA.V.M  
— Device modification  
— Device version

### Modifications

No record.

### Modifications prepared for new applications

Designation	Dimensions W x H x D [mm]	Max. weight [kg]	Notes
SHPA.1.A	489 x 152 x 78	11	WF545

### Specifications

The catalogue sheet was prepared on the basis of the following specifications:

Number	Version	Name
2298SHP	200605	Technical conditions
2197SHP	200721	SHPA Conditions of use
2208SHP	200604	SHPA Installation conditions
2454SHP	180322	Operating manual
2452SHP	180322	Maintenance manual, diagnostics

### Usage

MIREL VZ1 – train protection

MIREL SHP – train protection

---

**Modifications not recommended for new applications**

No record.

